



1200W 5L STAND MIXER

with easy cleaning accessories

User Manual



*Please refer to the warranty section for terms of your extended guarantee

READING AND STORING THE USER MANUAL



Before using this product, please read through this manual carefully paying particular attention to the safety instructions. Failure to do so may result in personal injury or damage to the product.

Carefully save this instruction manual for future reference. Ensure the user manual is included when passing the product on to any third parties.

IMPORTANT SAFETY INSTRUCTIONS FOR PROPER USE

When using electrical appliances, basic safety precautions should always be followed.

Only use the product as described in this user manual. Any other use is considered improper and may result in damage to property or persons.

The manufacturer or vendor cannot be held liable for damages or injury incurred through improper or incorrect use.

- **Read and familiarise yourself with all operating instructions before using this Stand Mixer.**
- Before plugging your unit into the mains, visually check that the unit is intact and has not suffered any transit damage.
- **DO NOT** use this Stand Mixer with an extension cable.
- Check that the voltage indicated on the data plate corresponds with that of the local network before connecting the appliance to the mains power supply.
- This appliance shall not be used by children.
- Keep the appliance and its cord out of reach of children.
- Close supervision is required when using this appliance near children.
- This appliance can be used by children aged from 8 years and above if they have been given supervision or instruction concerning use of the appliance in a safe way and understand the hazards involved. Cleaning and user

maintenance shall not be made by children unless they are aged from 8 years and above and supervised. Keep the appliance and its cord out of reach of children less than 8 years.

- Appliances can be used by persons with reduced physical, sensory or mental capabilities or lack of experience and knowledge if they have been given supervision or instruction concerning use of the appliance in a safe way and if they understand the hazards involved.
- Children shall not play with the appliance.
- **DO NOT** immerse the appliance or its cord in water or any other liquids.
- **DO NOT** leave the appliance unattended during use.
- **DO NOT** leave the appliance unattended whilst connected to the mains supply.
- Always use this appliance on a solid, level, non-flammable surface.
- **DO NOT** use this appliance outdoors.
- It is imperative to unplug the power cord after the appliance has been used, before it is cleaned and whilst being repaired.
- Repairs to electrical appliances should only be performed by qualified personnel. Improper repairs may place user at serious risk.
- **DO NOT** operate this appliance with a damaged plug or cord, after a malfunction or after being dropped or damaged in any way.
- Regular, periodic checks should be carried out on the mains cable to ensure no damage is evident. Should there be any signs of damage the appliance should not be used.
- If the power cable is damaged, it should only be replaced by suitable qualified personnel in order to avoid a hazard.
- **DO NOT** allow the mains cable to hang over sharp edges or come in contact with hot surfaces.

- **DO NOT** run the mains cable under carpets, rugs, etc.
- Allow the unit to cool before storage.
- This appliance is intended for household use only and should not be used for industrial purposes.
- **DO NOT** use any accessories or attachments with this appliance other than those supplied or recommended by the supplier.
- **DO NOT** use this appliance for anything other than its intended use.
- **DO NOT** push objects into any openings as damage to the appliance and/or electric shock may occur.
- Unplug after each use. Grasp the plug, not the cord.
- Always disconnect the appliance from the mains supply if it is left unattended and before assembling, disassembling or cleaning.
- Switch off the appliance and disconnect from the supply before changing accessories or approaching parts the move in use.
- Ensure that the mixing bowl is clear of all other utensils (attachments, spoons, etc.) before using the Mixer.
- **CAUTION: DO NOT touch or remove the attachments whilst they are rotating and/or the Stand Mixer is connected to the mains.**

Explanation of Symbols

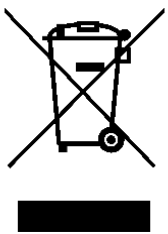
The following warning symbols or words are used in this instruction manual:



Products labelled with UK Conformity Assessment identifies products conforming to UK statutory requirements.



Products labelled with this symbol conform to applicable provisions of the European Economic Area.



You should now recycle your waste electrical goods and in doing so help the environment. This symbol means waste electrical products at the end of their useful life should not be disposed of with normal household waste and not sent to landfill. Please ensure it is taken to a suitable facility for disposal. Check with your Local Authority or retailer for recycling advice or visit www.recycle-more.co.uk enter your postcode to find out your nearest recycling site.



This symbol provides useful additional information on the use of this product.



This symbol indicates that the supply uses an alternating current mains supply.



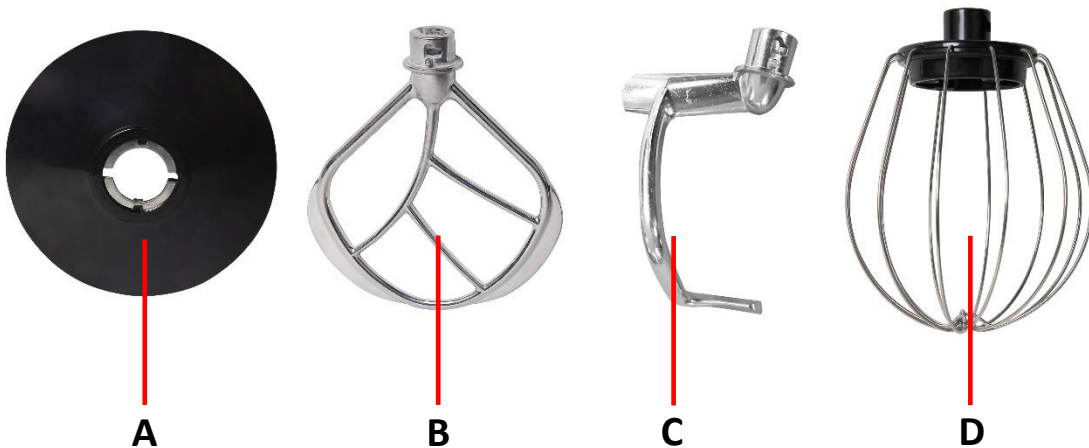
This Class 2 symbol indicates that the product is electrically double insulated and does not require an earth connection.

Description of Parts - Mixer



1. Top Housing
2. Splash Guard (with Shute)
3. Mixing Bowl
4. Mixer Base
5. Top Housing Release Button
6. Speed Control

Description of Parts - Attachments



- A. Dust Protector
- B. Mixing Attachment
- C. Dough Hook Attachment
- D. Whisk Attachment

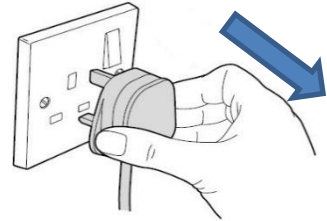
Before the first time you use your Stand Mixer

Remove all packing materials and discard responsibly.

Before using the Stand Mixer for the first time, wash all the attachments in warm soapy water and dry thoroughly afterwards. Do not immerse the Stand Mixer in water or any other liquids.

Operating Instructions – Preparation for mixing

1. Place the mixer on a solid, level non-flammable surface.
2. Ensure that the mains plug of the mixer is not inserted into the mains socket whilst preparing the mixer.



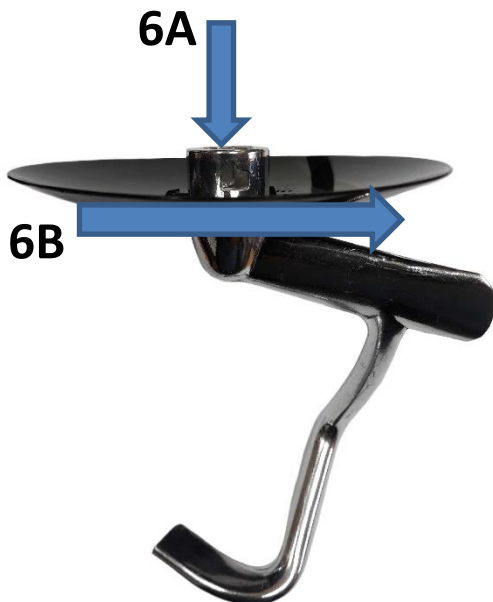
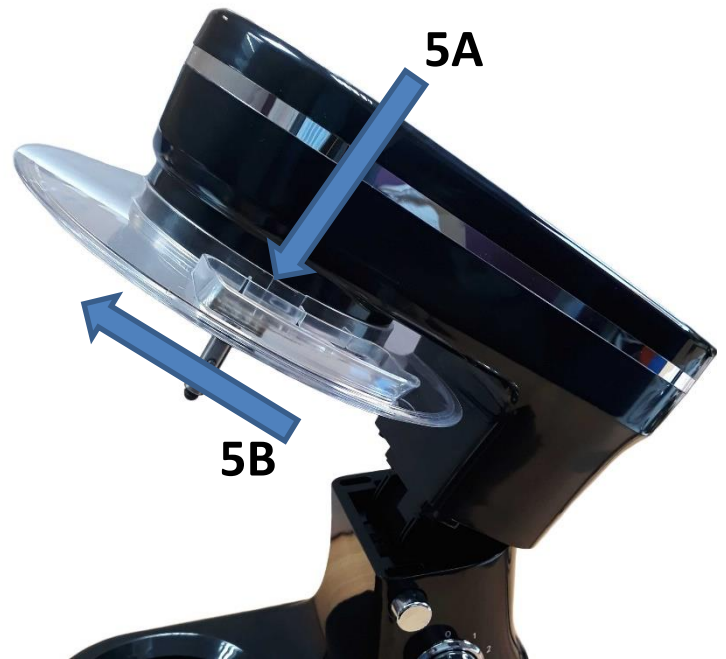
3. Press the **Top Housing Release Button (5)** then.....

.....Lift the **Top Housing (1)** upwards



4. Whilst holding the button down, lift the **Top Housing (1)** fully up at the front of the mixer then release the **Top Housing Release Button (5)** to lock the housing in the upright position.

5. Before fitting any of the attachments, take the **Splash Guard** (2) and attach it to the **Motor Housing** (1) by aligning the splines in the guard with the notches in the housing (arrowed right - a) and rotate to the guard towards the front of the mixer to lock it in place (arrowed right - b).



6. Select one of the three attachments you require that is appropriate for the mixing job to be done. The **Dough Hook Attachment** (C) is used in this example.

6A. Slide the **Dust Protector** (A) down over the attachment.

6B. Rotate to fasten the dust protector in place.

i Ensure that the **Dust Protector** (A) is the correct way up as in the image on the left.

7. Align the two lugs on the mixer shaft with the two notches in the attachment.

7A. Once aligned, push the attachment firmly up onto the mixer shaft.

7B. Rotate the attachment in the direction of the arrow to lock it in place as shown in the photo right.





8. Place the **Mixing Bowl (3)** on the **Base (4)** of the mixer (4). Turn the **Mixing Bowl (3)** clockwise slightly in the direction of the arrow to lock the bowl into position.

Support the **Top Housing (1)** at the front

9. Insert the food mixture into the **Mixing Bowl (3)**. Hold and support the **Top Housing (1)** at the front, Press the **Top Housing Release Button (5)** and carefully guide the **Top Housing (1)** down, release the button.



Repeat the above process for the **Mixing Attachment (B)**

i The **Dust Protector (A)** does not lock onto the **Whisk Attachment (D)** but is simply placed on top of the attachment.

Operating Instructions – Using the Mixer



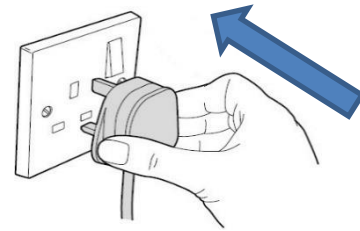
1. Before use, place the mixer on a solid, level and even work surface that is near to a mains outlet socket.

2. Any further mixture required during mixing can be added through Shute in the **Splash Guard** (2) arrowed right:



3. Ensure the **Speed Control** (6) is set to '0' as in the picture left.

4. Insert the mains plug (with dry hands) into the mains socket and switch the socket on (if applicable).



5. To operate the Mixer, rotate the **Speed Control** (6) clockwise from the '0' position through the increments (1-6) to steadily increase the speed. Use the following speed guidelines to select the required speed:

To mix or knead dough:

- The **Dough Hook Attachment** (C) should be used.
- A suggested flour and water ratio of 5:3 is recommended.
- Start with speed 1 and mix for approximately 10 seconds, then increase to speed 2 and mix for another 10 seconds, thereafter turn to speed 3 for approximately 3 minutes.
- When filling the mixing bowl, please ensure that the maximum quantity is not exceeded, please see the loading chart below.

Whipping egg whites or cream:

- The **Whisk Attachment** (D) should be used.
- Use speed 4 to speed 6 and whip the egg whites without stopping for approximately 5 minutes, the time will vary according to the size and quantity of the eggs, repeat until the desired consistency is achieved.
- For whipped cream, whip 250ml fresh cream at speed 4 to 6 for approximately 5 minutes.
- When filling the Mixing Bowl (3) with fresh milk, cream or other ingredients, please ensure that the maximum quantity is not exceeded, please see loading chart below.

Mixing Cakes, Buns, Puddings, etc.

- The **Mixing Attachment (B)** should be used.
- Mix the ingredients according to the available recipe, from speed 1 to 6 for about 5 minutes.
- Do not exceed the maximum quantity for the mixing bowl.

Maximum Loading Chart

Ingredients	Quantity
Bread Dough	1kg
Cake Mix	2.5kg
Cream/Milk	1L
Egg Whites	16
Flour	1.5Kg
Pastry	0.5kg

Mixing Tips

1. For most recipes, it is better to begin your mixing on a lower speed until the ingredients begin to combine, then move up to the appropriate speed for the particular mixture.
2. Generally, there is not one set speed for an entire recipe. You will need to change the speed of the mixer depending on what stage of the recipe you are working on.
3. Whilst mixing larger quantities, you may need to increase the speed of the mixer due to the larger load on the machine.
4. If additional ingredient needs adding to the recipe whilst mixing, it is advised to lower the speed to avoid the 'snow storm' effect. The speed can be raised again once the additional ingredients are added.

Care and Maintenance of your Stand Mixer

- Always disconnect the Stand Mixer from the mains power supply before cleaning.
- Wash all the attachments in warm soapy water.
- Clean the outside of the Stand Mixer with a clean damp cloth. Never clean with harsh or abrasive cleaners.
- Do not submerge the Stand Mixer in water or any other liquids.
- Do not clean any parts of this stand mixer in a dishwasher otherwise damage will occur.

Non-Rewireable Mains Plug

If your appliance is supplied with a non-rewireable plug fitted to the mains lead and should the fuse needed replacing, you must use an ASTA approved one (conforming to BS 1362 of the same rating). Never use a plug with the fuse cover missing. If in doubt, consult a qualified electrician.

If you need to remove the plug -**DISCONNECT FROM THE MAINS**- and then cut it off the mains lead and immediately dispose of it safely. Never attempt to reuse the plug or insert it into a socket outlet as there is a danger of electric shock.

Technical Data

Model Number	SDA1757
Rated Voltage	220-240V~ 50-60Hz
Rated Power	1200W
Protection Class	II
Mixing Bowl Capacity	5L (Max.)

Disposal of the Packaging

Dispose of paper and cardboard in appropriate paper re-cycling facilities.

Dispose of recyclable plastics in appropriate plastic re-cycling facilities.

Dispose of non-recyclable plastics in the appropriate plastics collection service.

Disposal of the Product



You should now recycle your waste electrical goods and in doing so help the environment. This symbol means waste electrical products at the end of their useful life should not be disposed of with normal household waste and not sent to landfill. Please ensure it is taken to a suitable facility for disposal. Check with your Local Authority or retailer for recycling advice or visit www.recycle-more.co.uk, enter your postcode to find out your nearest recycling site.



Customer Support

Should you require any product information, replacement parts or accessories, please contact our customer care team at help@daewooelectricals.com or call 0161 831 7879.

- *Replacement parts and accessories are guaranteed for 1 year from the date of purchase.*
- *It is important to note that your warranty becomes invalid should non Daewoo parts or accessories be used with this appliance*





DAEWOO®

WARRANTY

Thank you for purchasing your Daewoo product.

As part of our commitment to quality, we are offering you an extra 2 years warranty in addition to your 1 year guarantee

Your Daewoo product is guaranteed for 1 year from the date of original purchase, with proof of purchase or receipt. If any defect should occur due to faulty workmanship or material, your faulty product should be returned to the place of purchase, replacement or refund is at the discretion of the retailer.

The guarantee is subject to the following provisions:

- The product must be correctly installed and operated in accordance with the requirements contained in the instruction manual.
- The product must be used solely for domestic purposes.
- It does not cover general wear and tear, damage, misuse or any consumable parts.
- The guarantee will be rendered invalid if the product is re-sold or has been damaged through inexpert repair.
- The guarantee is only valid within the UK and Eire.

Your standard 1 year guarantee will only be extended to the maximum available for your individual product upon registration. (Note: products must be registered individually and covers the main body and housing). If you do not register your product within 28 days of the original purchase date, your product will only be guaranteed for 1 year.

To validate your extended 2 year warranty please register your purchase online within 28 days of the original purchase date by registering at:*

<https://help.daewooelectricals.com>

or

[Contact Us \(daewooelectricals.com\)](https://www.daewooelectricals.com)

*Your extended warranty is only valid with proof of purchase receipt and subject to the conditions outlined above.

Daewoo® is a registered trademark.
Produced and imported under license by
Eurosonic Group Limited
Brightgate House
1 Brightgate Way
Manchester M32 0TB UK

EU Rep: EuroSonic Magppie (ESM) Ltd. Ireland D05 X006

www.esgltd.com